



MALAGA SATELLITE MEETING

TRANSFER OF
INNOVATION AND
RESEARCH ON

MENTAL HEALTH PLANNING

IMPLICATIONS FOR SPAIN

MH

DATE

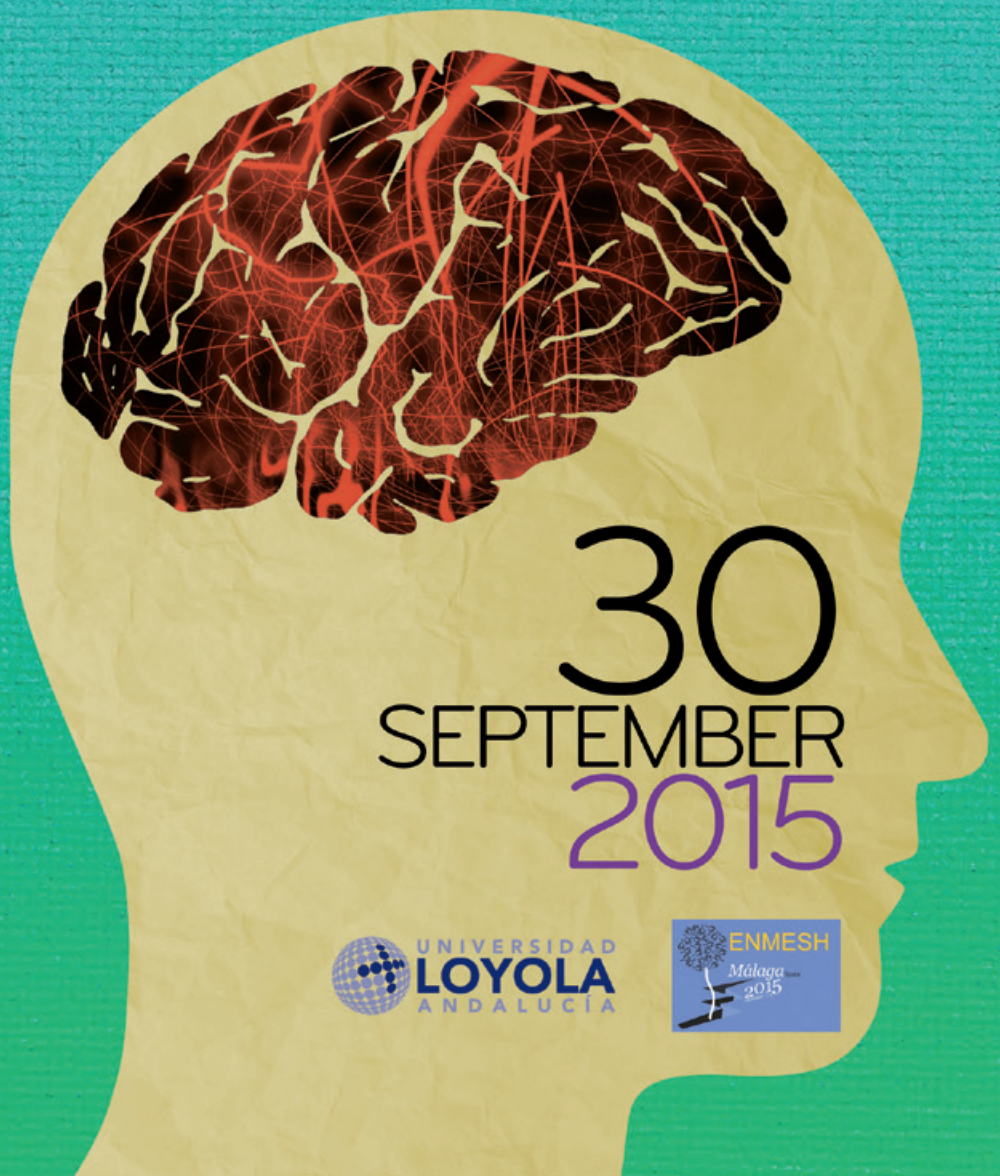
Wednesday,
September 30, 2015

LOCATION

Hotel NH Málaga
Avenida Río Guadalmedina, s/n.
29007 Málaga - Spain
Phone (+34) 952071323
www.nh-hoteles.es

INFORMATION

M. Gema Vera Luna
(Fase 20 Congresos)
Tel 902430960
Fax 902430959
Mobile 696644587



30
SEPTEMBER
2015



MALAGA SATELLITE MEETING

TRANSFER OF INNOVATION
AND RESEARCH ON

MENTAL HEALTH PLANNING

IMPLICATIONS FOR SPAIN

ORGANIZED BY

Vice-rector for Research at University Loyola Andalucía, with the collaboration of the scientific coordinators of the Mental Health Strategy of the National Health System and the Comprehensive Mental Health Plan for Andalucía.

Under the 11th ENMESH (European Network for Mental Health Service Evaluation) International Conference.

DIRECTED TO

Members of the Institutional and Technical Committee of the Mental Health Strategy of the National Health System.

AIMS

This meeting will bring together leading clinicians, academics, managers and mental health experts to discuss the latest scientific developments in international mental health as well as to deliberate and discuss issues affecting Mental Health in Spain.

11.45 SESSION 2

TRANSFER FROM INNOVATION AND RESEARCH ON MENTAL HEALTH PLANNING IN AUSTRALIA
Moderator: **Dr. Carlos Mur de Viu**. Manager of the University Hospital of Fuenlabrada. Scientific coordinator of the Mental Health Strategy of SNS.
Speaker: **Dr. Peter Carter**. Acting Director, Mental Health and Drug and Alcohol Program, NSW Ministry of Health, Australia.

12.30 SESSION 3

TRANSFER FROM INNOVATION AND RESEARCH TO MENTAL HEALTH PLANNING IN NEW ZEALAND
Moderator: **Prof. Enrique Echeburúa Odriozola**. Full Professor of Clinical Psychology. University of the Basque Country. Member of the Scientific Coordination of Mental Health Strategy of the National Health System.
Speaker: **Prof. Peter McGeorge**. Associate Professor and Director of the Inner City Health Program for St Vincent's Health Network. Sydney.

13.15 SESSION 4

IMPLICATIONS FROM ENGLISH-SPEAKING EXPERIENCES FOR MENTAL HEALTH PLANNING IN SPAIN
Moderator: **Pablo García-Cubillana de la Cruz**. Technical Comprehensive Mental Health Plan for Andalucía.
Speaker: **Prof. Luis Salvador-Carulla**. Professor of Disability and Mental Health. Head of the Mental Health Policy Unit, Brain and Mind Research Institute. University of Sydney.

14.00 LUNCH BREAK

15.30 SESSION 5

THE GLOBAL STRATEGY FOR MENTAL HEALTH IMPLICATIONS FOR THE TRANSFER OF RESEARCH ON MENTAL HEALTH PLANNING IN SPAIN AND OTHER EU COUNTRIES.
Moderator: **Dr. Francisco Ferre Navarrete**. Coordinator of the Mental Health Strategy of the National Health System.
Speaker: **Prof. José Miguel Caldas de Almeida**. Chairman of the Mental Health Department at the Faculty of Medical Sciences, the NOVA University of Lisbon Medical School, Lisbon Institute of Global Mental Health, Gulbenkian Foundation (Portugal).

16.45 COFFEE BREAK

17.15 DISCUSSION, CONCLUSIONS AND CLOSURE

Dr. José Carmona Calvo. Director of the Comprehensive Mental Health Plan of Andalucía.

PROGRAMME

10.00 INTRODUCTION

Dr. Francisco Ferre Navarrete. Coordinator of the Mental Health Strategy of the National Health System.
Dra. Berta Moreno Küstner. Scientific Coordinator of the 11th ENMESH (European Network for Mental Health Service Evaluation) International Conference.

10.30 SESSION 1

TRANSLATING RESEARCH FINDINGS INTO INNOVATIVE POLICY AND PRACTICE IN PRIMARY CARE: PERSPECTIVES FROM ENGLAND AND SPAIN
Moderator: **Prof. Prasuna Reddy**. School of Medicine and Public Health. The University of Newcastle, Australia.
Speaker: **Prof. Michael King**. Professor of Primary Care Psychiatry, Faculty of Brain Sciences, University College London, UK.

11.20 COFFEE BREAK



30
SEPTEMBER
2015

